



ARPAMED
ALMAS ROUYAN PARS
LABORATORY



+9821 423 89 000

0937 317 37 22

www.arpamed.com

SD *Ceramic*



Dentin

Selection of Metal Ceramic and Zirconia



Opaque Dentin

Selection of Metal Ceramic and Zirconia



SD Ceram

Gingiva

Selection of Metal Ceramic and Zirconia



G1



G6



BRIGHT

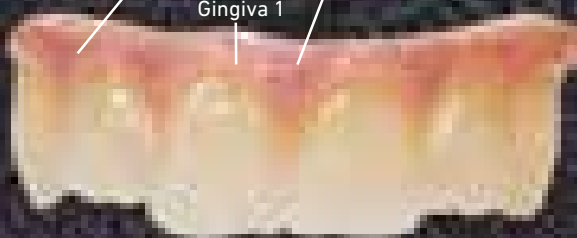


DARK

Gingiva 1 + Gingiva 6

Gingiva 1

Gingiva 6



Reconstruction of gum line is done with Gingiva. In order to create the perfect color, selection of gingiva types can be combined individually.



G1



G6



BRIGHT



DARK



G2



G3



G4



G5

*for reference

Glaze

Selection of Universal and LFU

We offer two types of Glaze Powders:

Universal Glaze can be used for both Metal Ceramic and Zircon.

LFU Glaze can be used for Press Ingot and Zircon. Additionally, it can be used on Metal Ceramic if desired.



before glazing



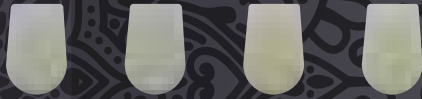
after glazing

SD Ceram

Enamel

Selection of Metal Ceramic and Zirconia

Intensive



57 58 59 60

Occusal

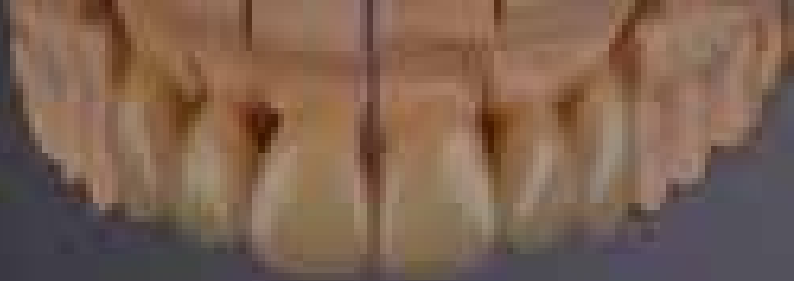


BLE Clear Neutral

Opal



Opal 1 Opal 2 Opal 3 Opal 4



Before Enamel Bake

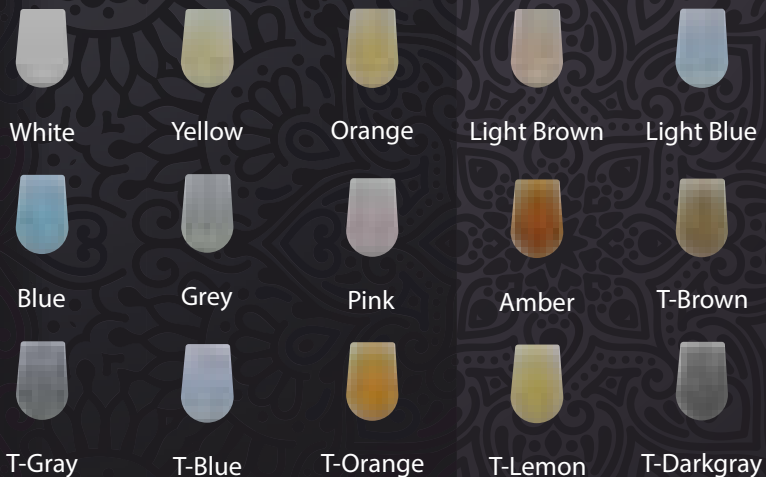
After Dentine Bake

After Enamel Bake



Translucent

Selection of Metal Ceramic and Zirconia



Chroma

Selection of Metal Ceramic and Zirconia



A



B



C



D



White



Yellow



Orange



Brown



Pink



Violet



Blue

Mamelon

Selection of Metal Ceramic and Zirconia



Citron



Cream



Sunny Beach



Maple



Beechtree



Sandalwood



Teak



Fruit Pink

Modifier

Selection of Metal Ceramic and Zirconia



Base 1



Base 2



Base 3



Base 4



Base 5



FLU 1



FLU 2



FLU 3



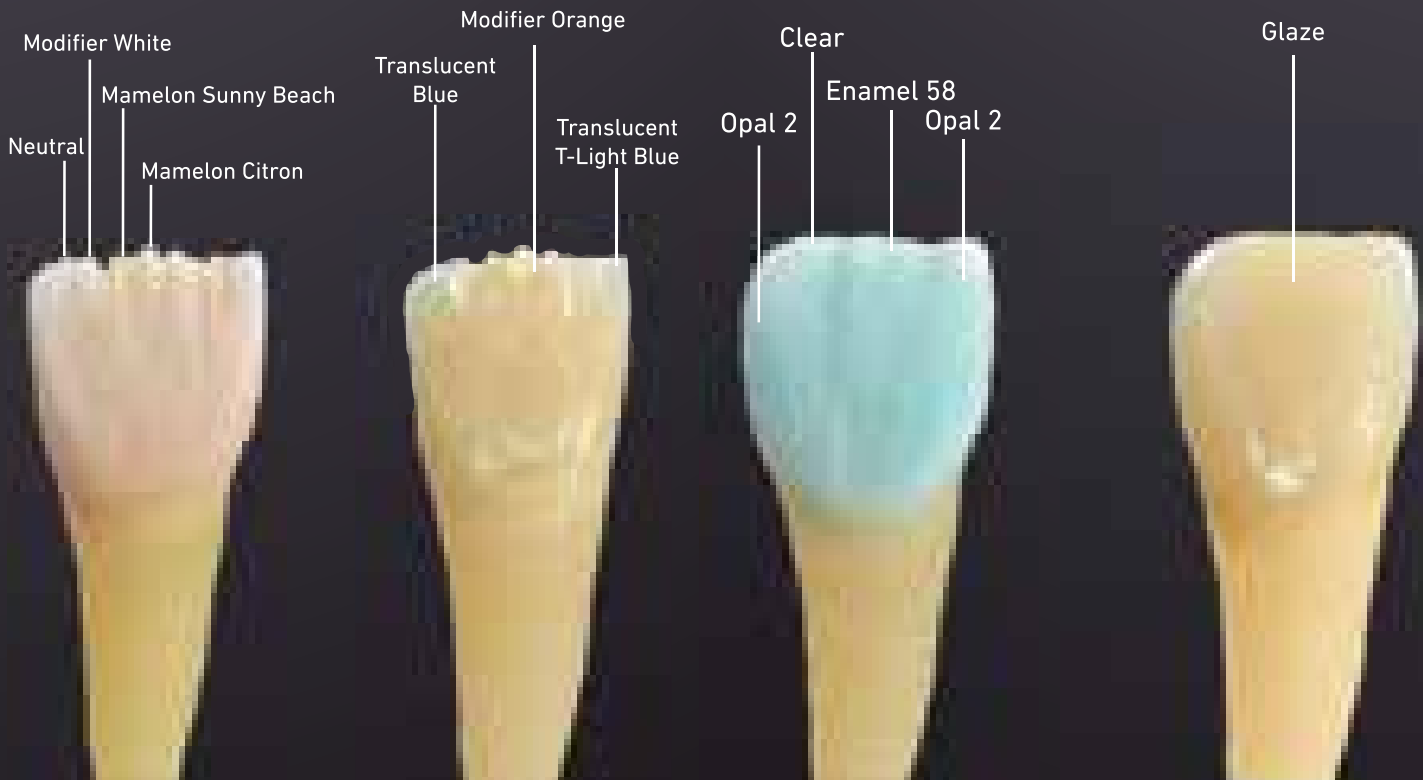
FLU 4



Cuspid



Fosse



Stain Powder

LFU



Shade A Light
Fluor



Shade B Light
Fluor



Shade C Light
Fluor



Shade D Light
Fluor



Shade A Fluor



Shade B Fluor



Shade C Fluor



Shade D Fluor



White



Grey



Vanilla



Beige



Yellow



Yellow 2



Orange



Medium Orange



Orange 2



Champagne



Safari



Safari Intensive



Olive



Khaki



Rose



Rose Pink



Black



Red Brown



Dark Brown



Red



Brown



Smoke



Blue



Pigeon Blue



Green

Zirconia System

Firing instruction

	Preheating Temp.	Drying Time	Vacuum Start	Heat Rate	Vacum Stop Final Temp.	Holding Time	Cooling
Pure Firing	500°C	3 min	500°C	65°C / min	980	5 min	3 min
1st Dentin Firing	450°C	6 min	450°C	45°C / min	810°C	1 min	3 min
2nd Dentin Firing	450°C	6 min	450°C	45°C / min	810°C	1 min	3 min
Glaze Firing	450°C	3 min	-	45°C / min	800°C	1 min	3 min

MC System

Firing instruction

	Preheating Temp.	Drying Time	Vacuum Start	Heat Rate	Vacum Stop Final Temp.	Holding Time	Cooling
Oxidation	<i>Refer to alloy manufacturer's instruction</i>						
1st Opaque Firing	500°C	6 min	500°C	65°C / min	965°C	1 min	3 min
2nd Opaque Firing	500°C	6 min	500°C	65°C / min	965°C	1 min	3 min
1st Dentin Firing	450°C	6 min	450°C	50°C / min	920°C	1 min	3 min
1st Dentin Firing	450°C	6 min	450°C	50°C / min	915°C	1 min	3 min
Glaze Firing	450°C	3 min	-	50°C / min	910°C	1 min	3 min