

DE COREMATRIX

ZIRCONIA BLOCK



+9821 423 89 000

0937 317 37 22

www.arpamed.com

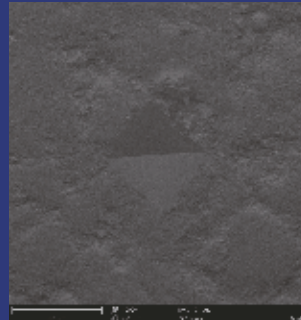
SIGMADENT



DE COREMATRIX[®] Eg I

This series of De Corematrix EgI blank is our basic grade fully qualified for making bridges with more than 3-units combining high strength with decent transparency.

- ★ De Corematrix EgI-white blank, suitable for external shading process.
- ★ De Corematrix EgN-shaded blank, suitable for the pre-shading process, with 16 shades available.



HT

- ★ Bending strength ≥ 1200 MPa
- ★ Light transmittance $\approx 37\%$

- ★ Cubic phase content $< 5\%$
- ★ Impurity content ≤ 500 ppm

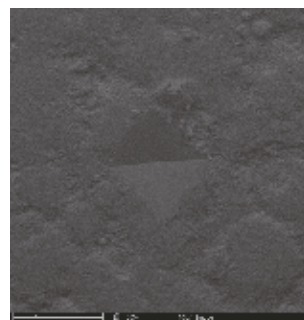
- ★ Color: white, VITA 16 shades



DE COREMATRIX[®] Eg II

This series of De Corematrix EgII blank is our basic grade fully qualified for making bridges with more than 3-units combining high strength with decent transparency.

- ★ De Corematrix EgII-white blank, suitable for external shading process.
- ★ De Corematrix EgIIN-shaded blank, suitable for the pre-shading process, with 16 shades available.



ST

- ★ Bending strength ≥ 1200 MPa
- ★ Light transmittance $\approx 39\%$

- ★ Cubic phase content $< 5\%$
- ★ Impurity content ≤ 500 ppm

- ★ Color: white, VITA 16 shades



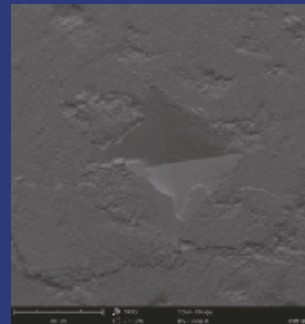
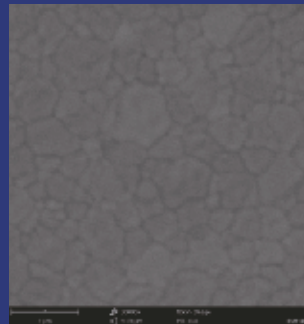
DE COREMATRIX[®] Et

This series of De Corematrix Et blank demonstrates the highest transparency with decent strength.

It fits for the production of single crown and 3-units bridges in anterior region.

- ★ De Corematrix Et-white blank, suitable for external shading.

TT

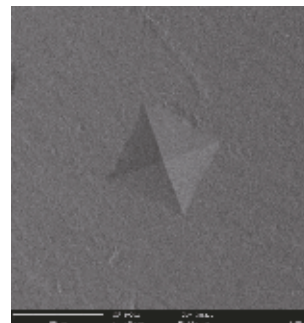
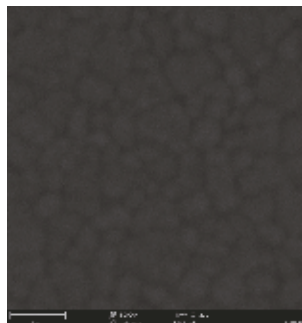


- ★ Light transmittance \approx 48%
- ★ Cubic phase content \approx 60 %
- ★ Impurity content \leq 500 ppm
- ★ Color: white, VITA 16 shades



DE COREMATRIX[®] ML

ML



- ★ Bending strength \geq 1000 MPa
- ★ Light transmittance \approx 46%
- ★ Cubic phase content \approx 35 %
- ★ Impurity content \leq 500 ppm
- ★ Color: white, VITA 16 shades

**PRODUCT
USAGE**

HT-De Corematrix Eg I

ST-De Corematrix Eg II

TT-De Corematrix Et

ML-De Corematrix ML

Strength

1200 MPa

1300 MPa

600 MPa

1000 MPa

Transparency

~40%

~43%

~49%

~46%

Sintering program for bridge with 1-5 units

Step	Start Temp./ (°C)	Max.Temp./ (°C)	Time/(min)	Speed(°C /min)	Speed(°C /h)
1	20	300	28	10.00	600
2	300	1000	58	12.00	720
3	1000	T _{max}	106	5.00	300
4	T _{max}	T _{max}	120	0.00	0.00
5	T _{max}	20	189	-8.00	-480

Sintering program for bridge with more than 6 units

Step	Start Temp./ (°C)	Max.Temp./ (°C)	Time/(min)	Speed(°C /min)	Speed(°C /h)
1	20	300	28	10.00	600
2	300	1000	58	12.00	720
3	1000	T _{max}	133	4.00	240
4	T _{max}	T _{max}	120	0.00	0.00
5	T _{max}	20	189	-8.00	-480